

A photograph of a modern, multi-story residential building with a white facade and curved architectural elements. The building features several balconies with glass railings. The sky is a clear, bright blue.

uha

SELECTED PROJECTS

Residential

WHO WE ARE

We are a 24-hour studio transforming urban spaces

Our asynchronous approach means that somewhere we are always open. Distributed across six time zones, our team of Architects, designers, urbanists, visualisers, sustainability consultants, and project managers design and deliver projects around the clock. As office hours draw to a close in Tokyo, work continues in Mumbai and construction sites open in London. With over 40 projects currently under construction over three continents, our multi-nodal studio provides a variety of services within an accelerated timeline.

COVER

Library Lofts Limassol, Cyprus

RIGHT

Sky Tower Limassol, Cyprus

uha.global



RESIDENTIAL

WHAT WE DO

We design open and flexible living from private homes to high-rise

We have extensive experience in residential design having been involved in residential projects ranging in scale from large complex condominium towers, and multiple unit projects to smaller single houses and refurbishment projects. Regardless of scale our approach to residential architecture is defined by a strategic and thoughtful use of site, views, and natural light. This also involves careful programmatic analysis and planning of functions, adjacencies, and separation of public and private spaces.

We believe that homes should be open, flexible, and planned to provide frameworks within which residents are free to express their own tastes and styles, ensuring unique and personal spaces whilst keeping a general atmosphere coherent with our architecture. We design homes that are comfortable, energy efficient, and socially sustainable by working alongside highly specialised teams (civil, structural, MEP, environmental analysts etc.) to propose and deliver innovative and practical solutions from the conception of the project.

RIGHT

Eden Roc Limassol, Cyprus

uha.global



RESIDENTIAL

GRAPHISOFT AWARDS 2021

BIM Project of the Year



LIMASSOL, CYPRUS

Eden Roc

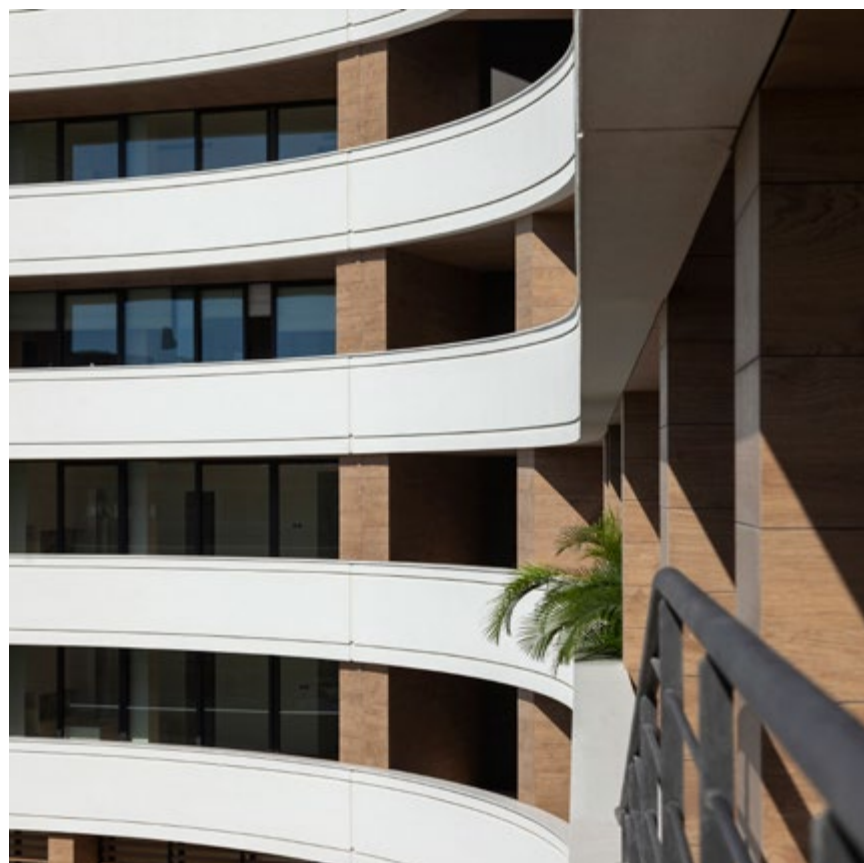
SECTOR	Residential, Masterplans
CLIENT	bbf
AREA	23,276 m ²
STOREYS	8
STATUS	On site

Eden Roc is a luxury residential complex in central Limassol, immediately adjacent to the Amathos river, approximately half a kilometre from the seafront. The development is divided into two plots, with a building on each plot.

The design is influenced by elements from both the natural and man-made world. Reminiscent of a superyacht, the superstructure of each block gently terraces down from its highest point with balconies on all sides. Wide horizontal bands form continuous balustrades that wrap around the blocks at each level, emphasising the horizontal nature of the development, and stretching to over 300 metres in length.



EDEN ROC
Plots A and B from the air



EDEN ROC
Private balconies and terraces





EDEN ROC
Stepped penthouses with private external terraces



Project of the Year

LIMASSOL, CYPRUS

Sky Tower

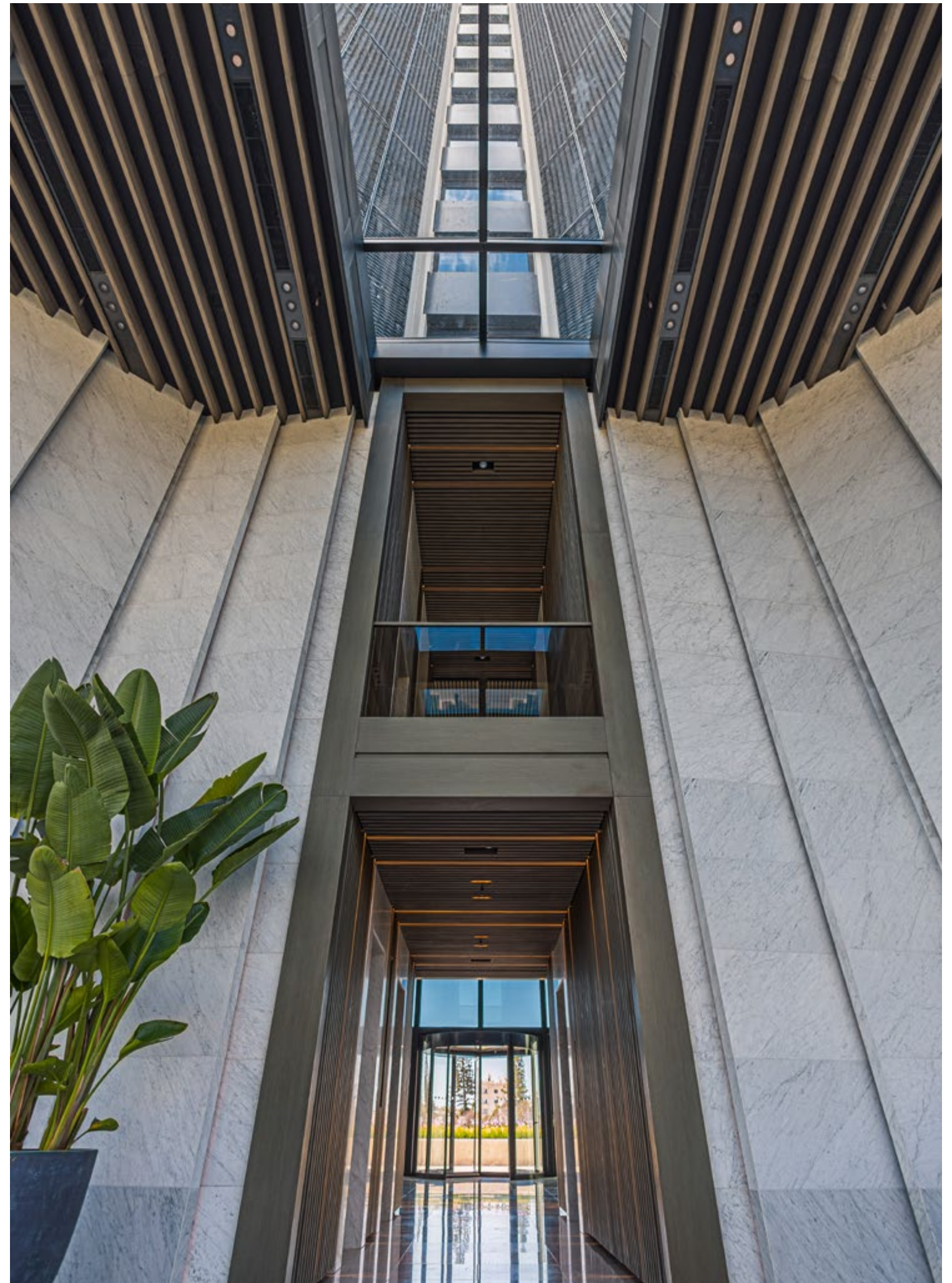
SECTOR	Residential, High-rise
CLIENT	BBF
AREA	18,900 m²
HEIGHT	105 m
STATUS	On site

Delivered in January 2022, this high-rise residential tower is located in the historic city of Limassol on the southern coast of Cyprus. Situated on a prime plot 300 m from the seafront, it reaches up to 105m tall and has a gross built area of 30,000 m². The architectural expression of the tower is achieved with a series of linear elements that, like the roots of a tree, gently break ground and soar skywards.

Interior spaces and amenities include a dramatic entrance lobby with glazed skylight offering vertiginous views of the tower above, a resident’s lounge and mezzanine level bar looking out on to the pool and landscaped gardens, as well as spa and fitness centre. All apartments are oriented towards the seafront, with clean contemporary lines and natural stone and timber finishes, that blend interior and exterior space.



SKY TOWER
Landscape and atrium





SKY TOWER
Spa pool and lobby



SKY TOWER
Dynamic lighting





LIMASSOL, CYPRUS

Hillside Villas

CLIENT	bbf
SITE	9,850 m ²
AREA	2,400 m ²
VILLAS	14
STATUS	On site (Completion Q3 2022)

The 2.5-acre site has views of the sea to the south, the city of Limassol to the west, and lush green mountains to the north and east, making it an ideal location for high-end residential villas. The site’s slope allowed us to position the villas on two tiers connected by a loop road. Due to their orientation, all villas have uninterrupted sea views from all internal and external spaces.



HILLSIDE VILLAS
An exclusive villa community



HILLSIDE VILLAS
On site in January 2022

uha.global



RESIDENTIAL



HILLSIDE VILLAS
An exclusive villa community



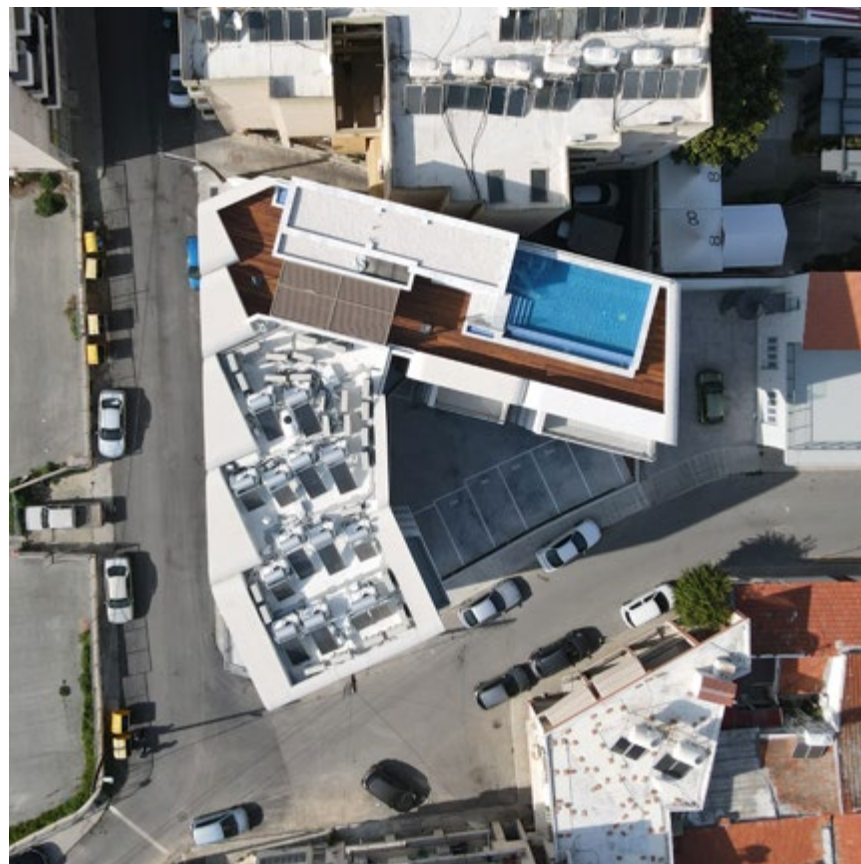
LIMASSOL, CYPRUS

Library Lofts

SECTOR	Residential
CLIENT	bbf:
AREA	1,100 m ²
APARTMENTS	16
STATUS	Complete

Library Lofts is a residential development in an up-and-coming inner-city area near the historical centre of Limassol, Cyprus. The project is adjacent to the city public library from which it gets its name. The 1,100 m² development consists of 16 2-bedroom apartments designed for young families and recent graduates. The apartments are arranged over four levels, with ground floor parking and a communal rooftop terrace with a small pool.

The design vocabulary developed for this project is both classic and contemporary, with clearly delineated volumes. The façade is articulated using a system of arches – creating a distinct external profile emphasising the verticality of the overall development, as well as breaking the volume down to the local scale of the adjoint context. This architectural expression draws reference from the historic arches in Old Town Limassol. A cut-out in the roof allowed us to hide technical equipment and solar panels to ensure the arches retain their clarity.



LIBRARY LOFTS
Compact but luxurious residences nestled in central Limassol





LIBRARY LOFTS

Compact but luxurious residences nestled in central Limassol



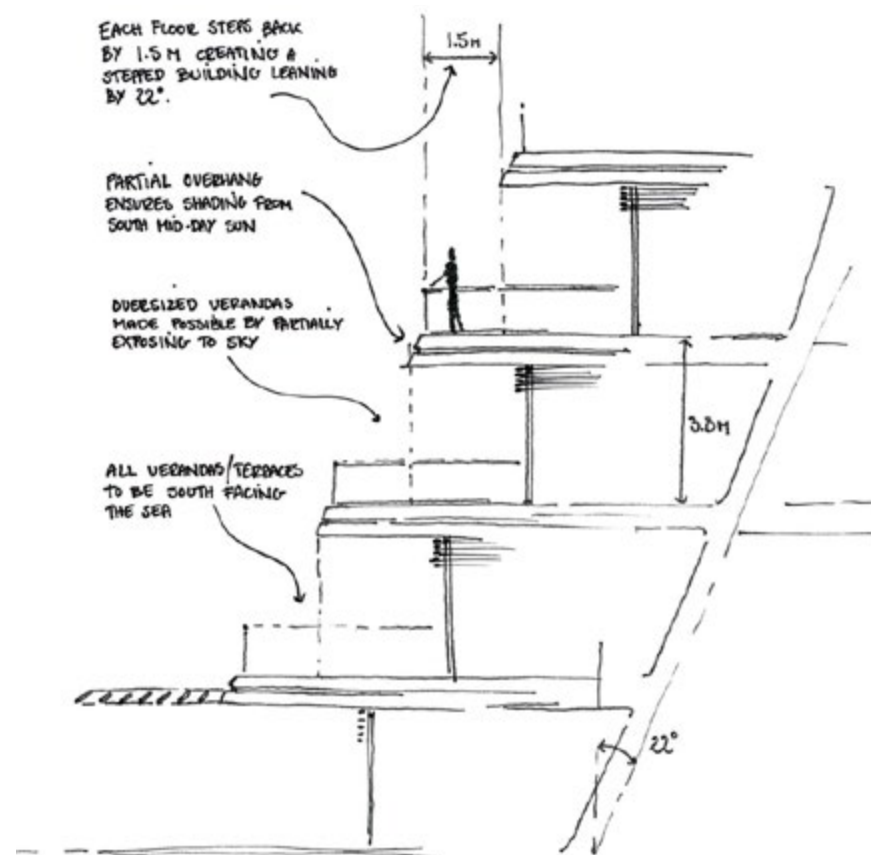
LIMASSOL, CYPRUS

Marco Polo

SECTOR	Residential
CLIENT	bbf
AREA	23,276 m ²
LEAN	22°
STATUS	On site

Marco Polo is located adjacent to the St Raphael Marina which is located 6 miles East of Limassol centre and is part of the luxury 5 star St Raphael Resort. The only private Marina in Cyprus, St Raphael has over 230 berths for yachts up to 30 m LOA and a world class luxury resort on its doorstep this marina can cater for all. The 32 metre tower consists of south-facing luxury 2-, 3- and 4-bedroom duplex apartments.

The concept for this luxury development was developed in order to maxi mise south facing terraces. The local Cypriot norms allow for a limit of 25% of the overall internal area to be added as ‘covered veranda’ unless the terrace is open to the sky. In order to exceed the 25%, every floor was offset by 1.5 m to create a large area of ‘uncovered terrace’ on each floor and resulting in supersized sea-facing terraces on each floor.



MARCO POLO
Smart engineering and mechanical solutions





MARCO POLO
On site in August 2022





MARCO POLO
On site in November 2022



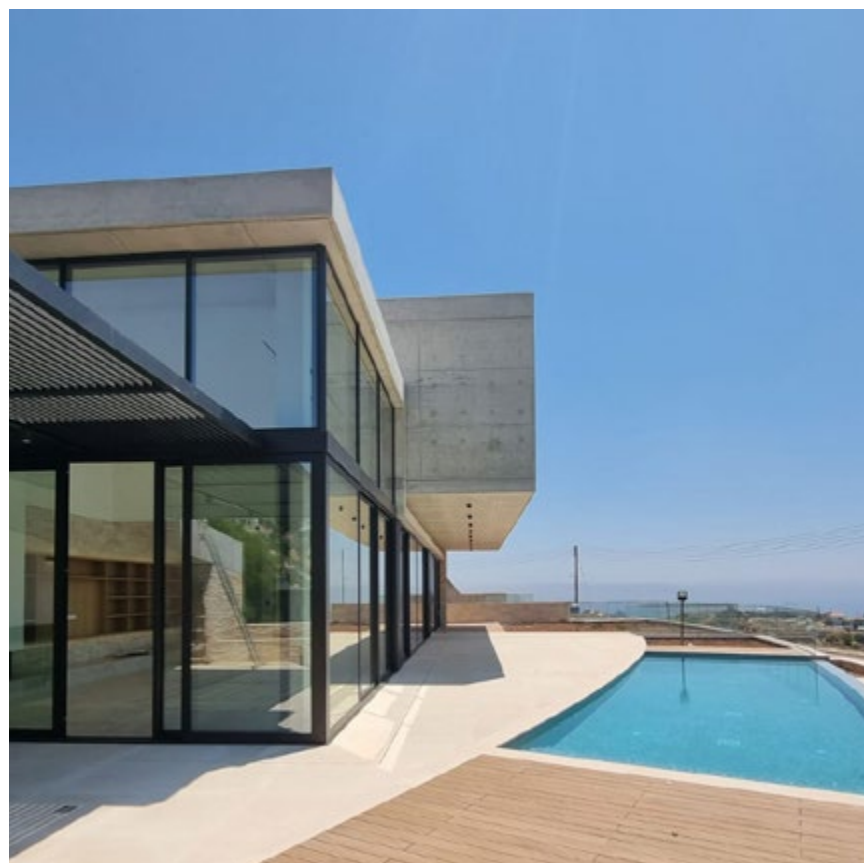
LIMASSOL, CYPRUS

Montebello Villas

SECTOR	Residential, Villas
CLIENT	bbf
SITE	4,000 m ²
VILLAS	4
STATUS	On site

Situated on 4,000 m² of sea-facing cliffside this luxury development proposes four contemporary villas that have been carved into the rock to merge with the landscape. The modern yet timeless qualities of this luxury villas development are enhanced by the sophisticated material palette that includes clear glazing and local stone combined with exposed concrete.

The design for the villas takes full advantage of the steep inclination of the site (over 20 m height difference between bottom and top of the site) to ensure that each room in every villa benefits from unobstructed sea views. The plot has been divided into four separate parcels of land on which the villas have been positioned to ensure both privacy and minimal overlooking. All four villas benefit from large swimming pools and terraces with outdoor dining areas.



MONTEBELLO VILLAS
On site in June 2022

uha.global



RESIDENTIAL



MONTEBELLO VILLAS
On site in June 2022



LIMASSOL, CYPRUS

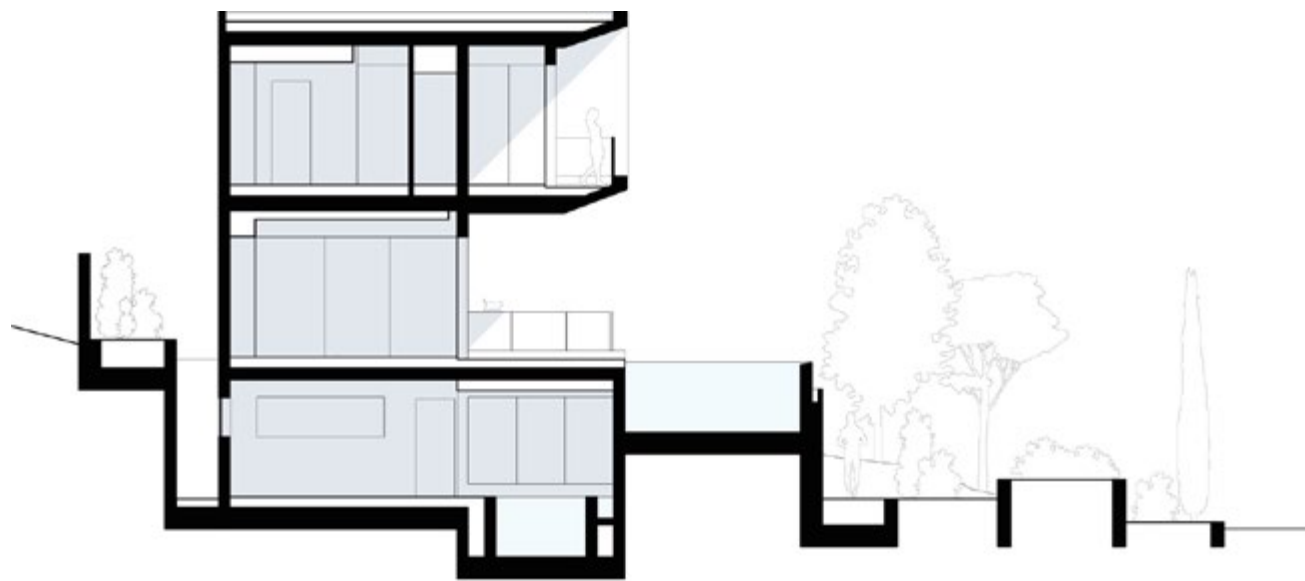
Villa Rossi

CLIENT	bbf:
AREA	1,260 m ²
VILLAS	1
POOLS	2
STATUS	On site



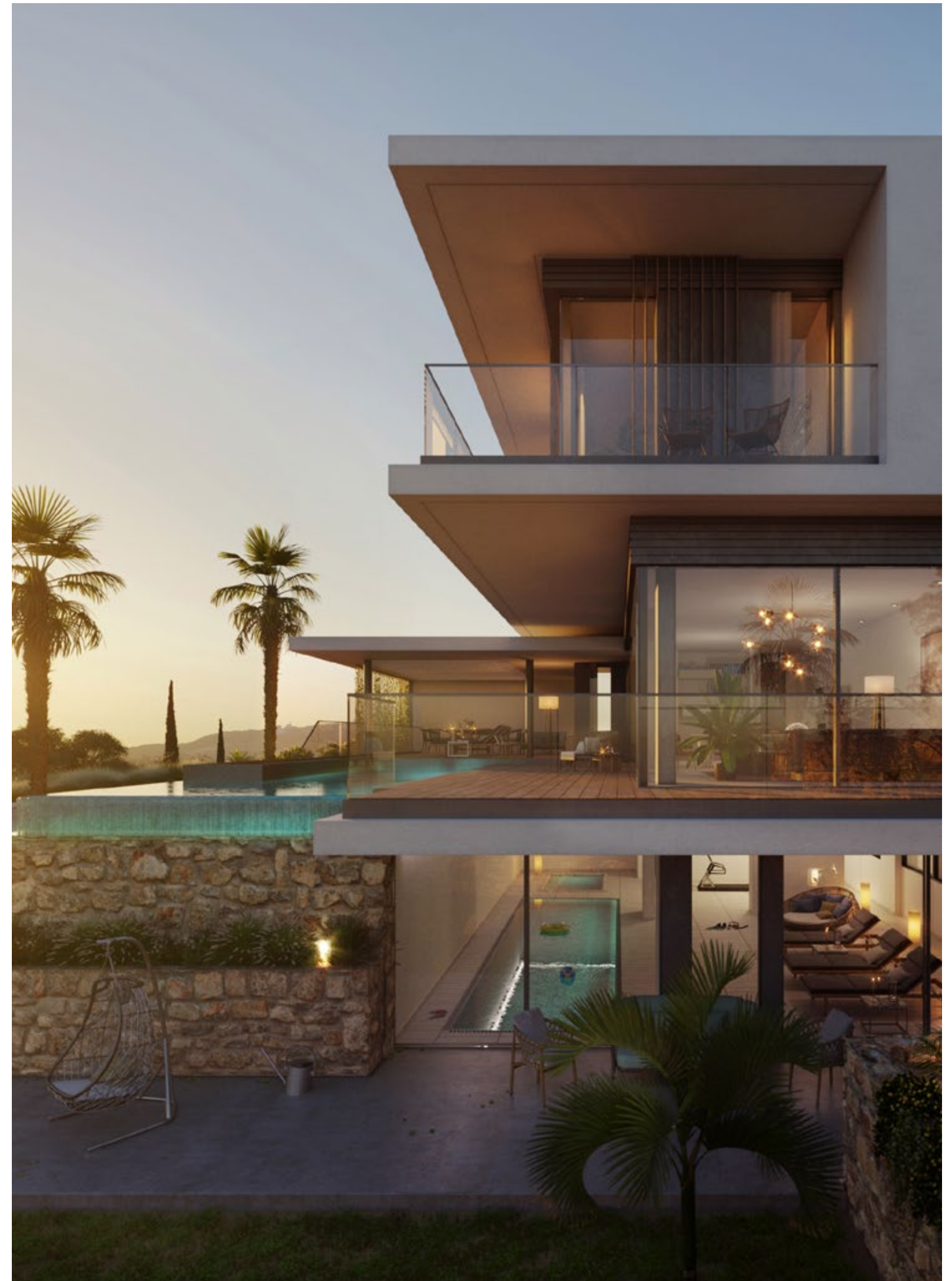
VILLA ROSSI
Home meets hospitality





VILLA ROSSI
Section

uha.global



RESIDENTIAL



PUEBLA, MEXICO

Sadro Residencias

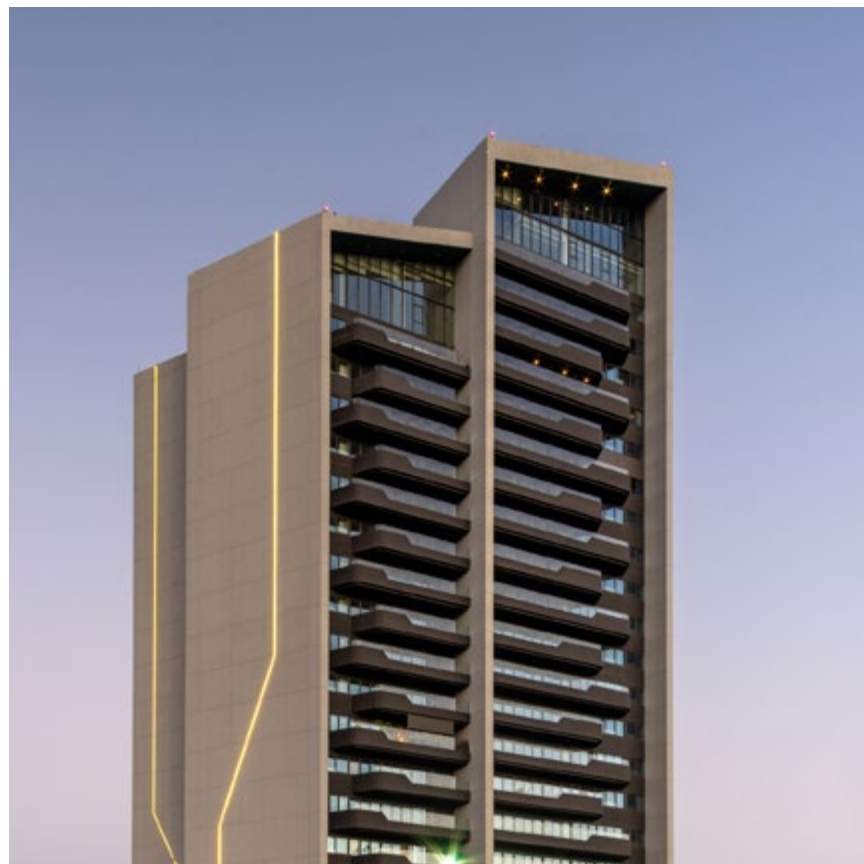
SECTOR	High-rise, Residential, Hospitality, Retail
CLIENT	Sadro
AREA	112,000 m²
HEIGHT	110 m
STATUS	Phase 1 completed

Sadro Residencias is the first LEED for Homes residential development in Mexico. Situated in Puebla, in the heart of Mexico, the project comprises two apartment towers, a corporate office and a commercial area. Puebla is a UNESCO World Heritage site, well known for its colonial period architecture and the presence of several dormant and active volcanoes in the surrounding national parks: Popocatepetl and Iztaccihuatl to the west, and La Malinche to the northeast.

The 16,000m² project site is in the Lomas de Angelopolis area with direct access to the Periferico Ecologico, the city’s ring road. The Client, SADRO, is a family-owned real estate business, originally from Puebla. They have owned the site for generations, and previously worked the land as a ranch.



SADRO RESIDENCIAS
Residents' garden



SADRO RESIDENCIAS
On site in April 2022





SADRO RESIDENCIAS
On site in April 2022



MEXICO CITY, MEXICO

Torre Revolución

SECTOR	Mixed-use, High-rise
CLIENT	CINUK
AREA	823 m²
HEIGHT	103 m
STATUS	Concept

Torre Revolución is a svelte 23-storey mixed-use tower with hotel and residential floors as well as business centre and public viewing gallery. Located in the Plaza de la Revolución in central Mexico City, the tower directly faces the iconic Monumento a la Revolución, and continues the trend for taller structures in this central business district.

The external walls of the tower are clad in the same Cantera Mexicana stone as the Monumento a la Revolución, and the copper panels of the monument’s dome are mirrored in the privacy screens that cover the principal façade of the tower. The gentle curved transition between the public spaces at grade and the hotel component above are reminiscent of the composite steel and stone arches that support the monument.



TORRE REVOLUCIÓN
Concept visuals

uha.global



RESIDENTIAL



TORRE REVOLUCIÓN
Panoramic views of the Monumento a la Revolución from the spa



NEW DELHI, INDIA

Versace Tower

SECTOR	Mixed-use, Residential, Masterplans
CLIENT	Unity Group
AREA	85,480 m ²
HEIGHT	208 m
STATUS	On site

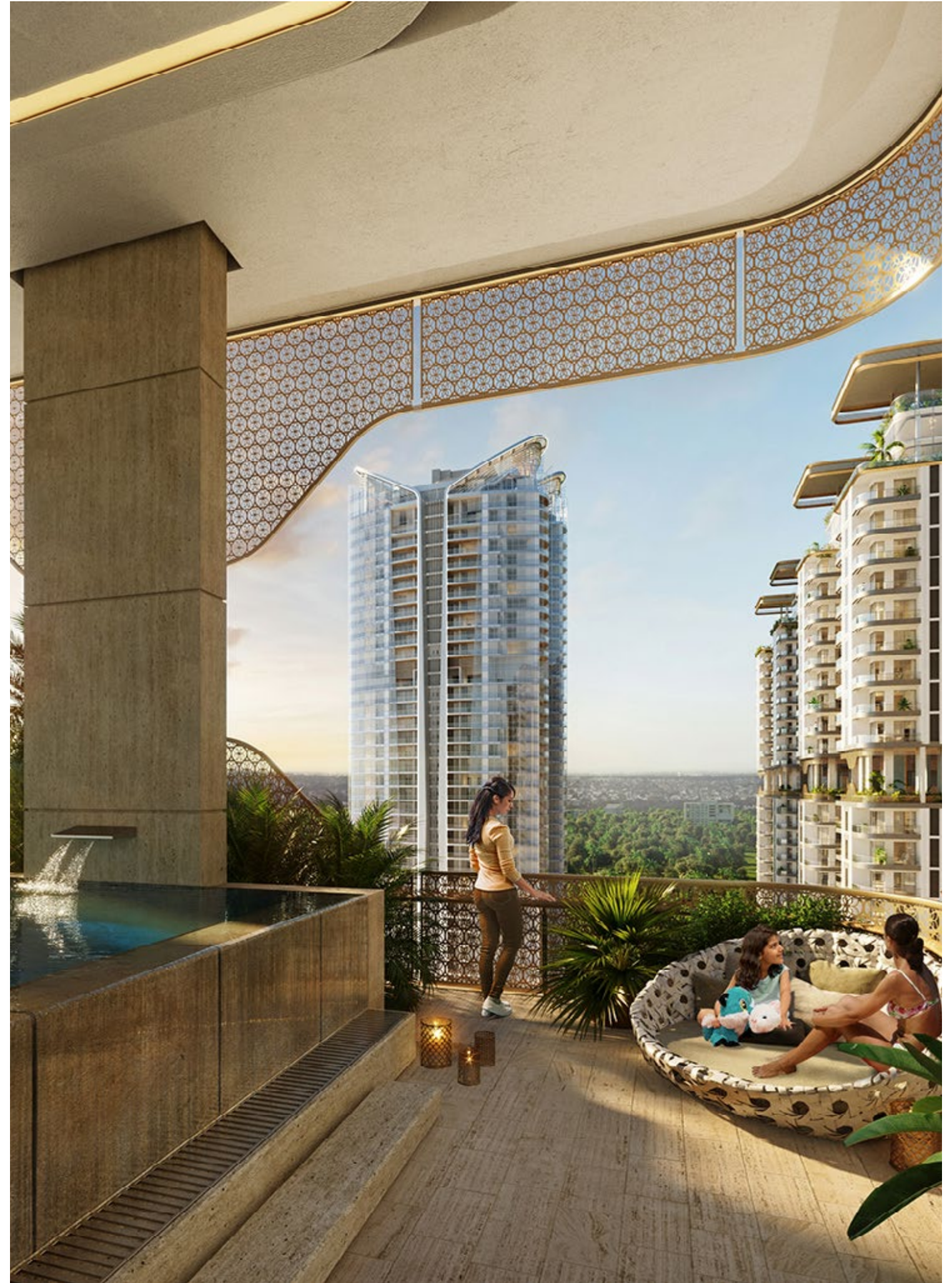
At over 208 metres, the 50-storey centrepiece of the Amaryllis masterplan will be the tallest residential structure in India’s capital city. Unity Group appointed UHA, in collaboration with Versace Home, to design an iconic residential tower for New Delhi.

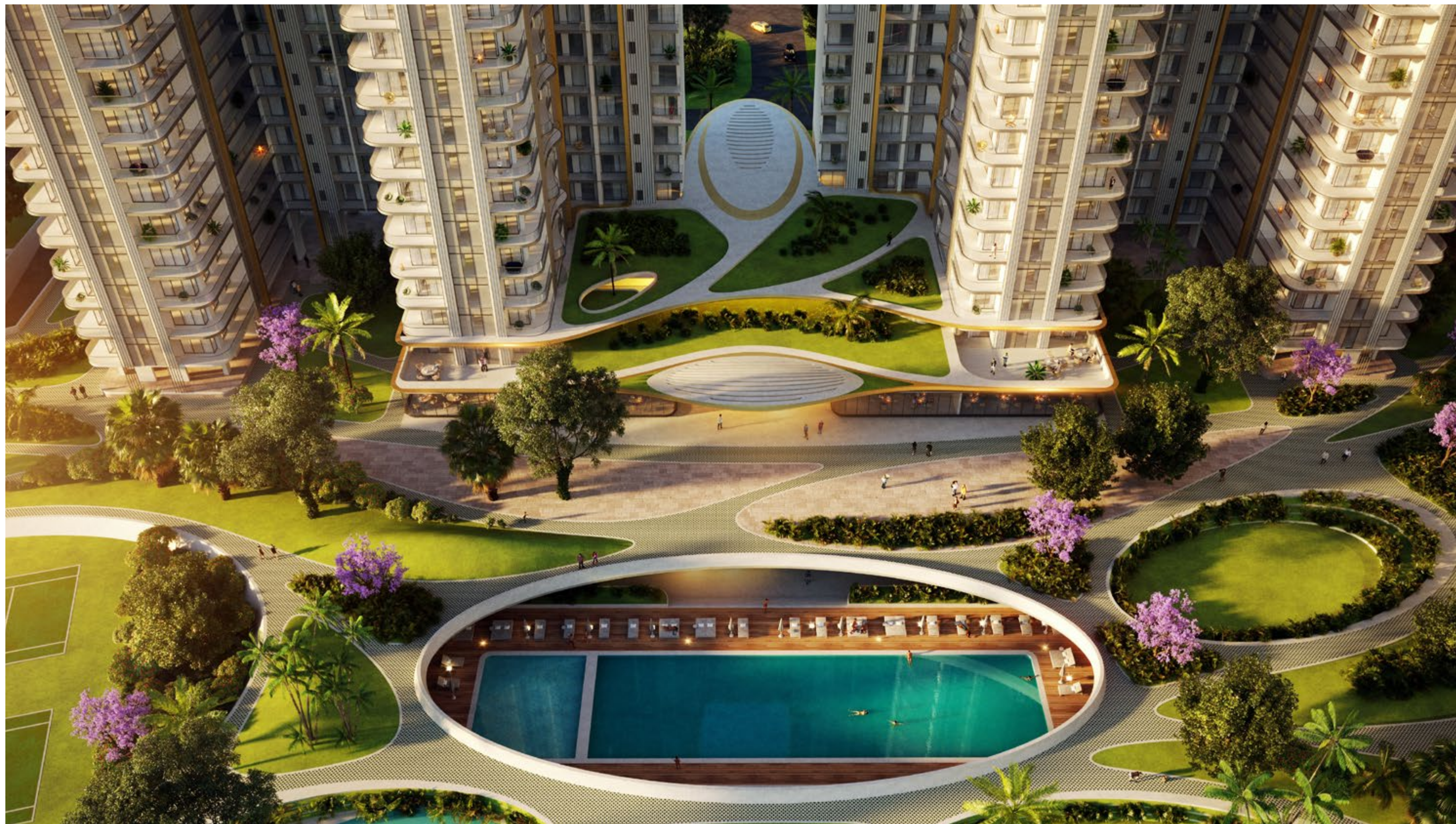
The tower plan is composed of 2 oval floorplates connected by a central core that allows panoramic views out across the city and inwards towards the central park area of the masterplan. The tower accommodates a total of 160 4- and 5-bedroom luxury apartments. An entrance canopy marks the entry to the grand lobby, with café, business centre, and a unique Versace gallery space.

Outdoor terraces punctuate the tower and provide an exclusive calm oasis for residents and their guests. The top of the east wing houses an outdoor infinity pool, a spa and fine dining restaurant with breath-taking views towards the city government quarter. The top of the west wing, the taller of the two towers, has a viewing deck, restaurant, and cigar lounge with a rooftop helipad.



VERSACE TOWER
On site in August 2022





VERSACE TOWER

A verdant central community park and exclusive clubhouse

Lisbon

lisbon@uh-architects.com

R. da Atalaia 67 1ºE
1200-037 Lisboa
Portugal

London

london@uh-architects.com

3 Murphy Street
London, SE1 7FP
UK

Budapest

budapest@uh-architects.com

Stollár Béla u. 4. Budapest, 1055
Hungary

Limassol

limassol@uh-architects.com

Unit no. 9, Ydras 7, Germasogeia
Limassol 4047, Cyprus

Mumbai

mumbai@uh-architects.com

Unit 201 B, Peninsula Towers
Peninsula Corporate Park
Ganpatrao Kadam Marg, Lower Parel
Mumbai 400013

Taipei

taipei@uh-architects.com

No 94, Sec. 3, Ren-ai Road,
Da-an Dist, Taipei City
Taiwan (ROC)
106091

Tokyo

tokyo@uh-architects.com

505 Gulicina Kamikitazawa
Japan 168-0073